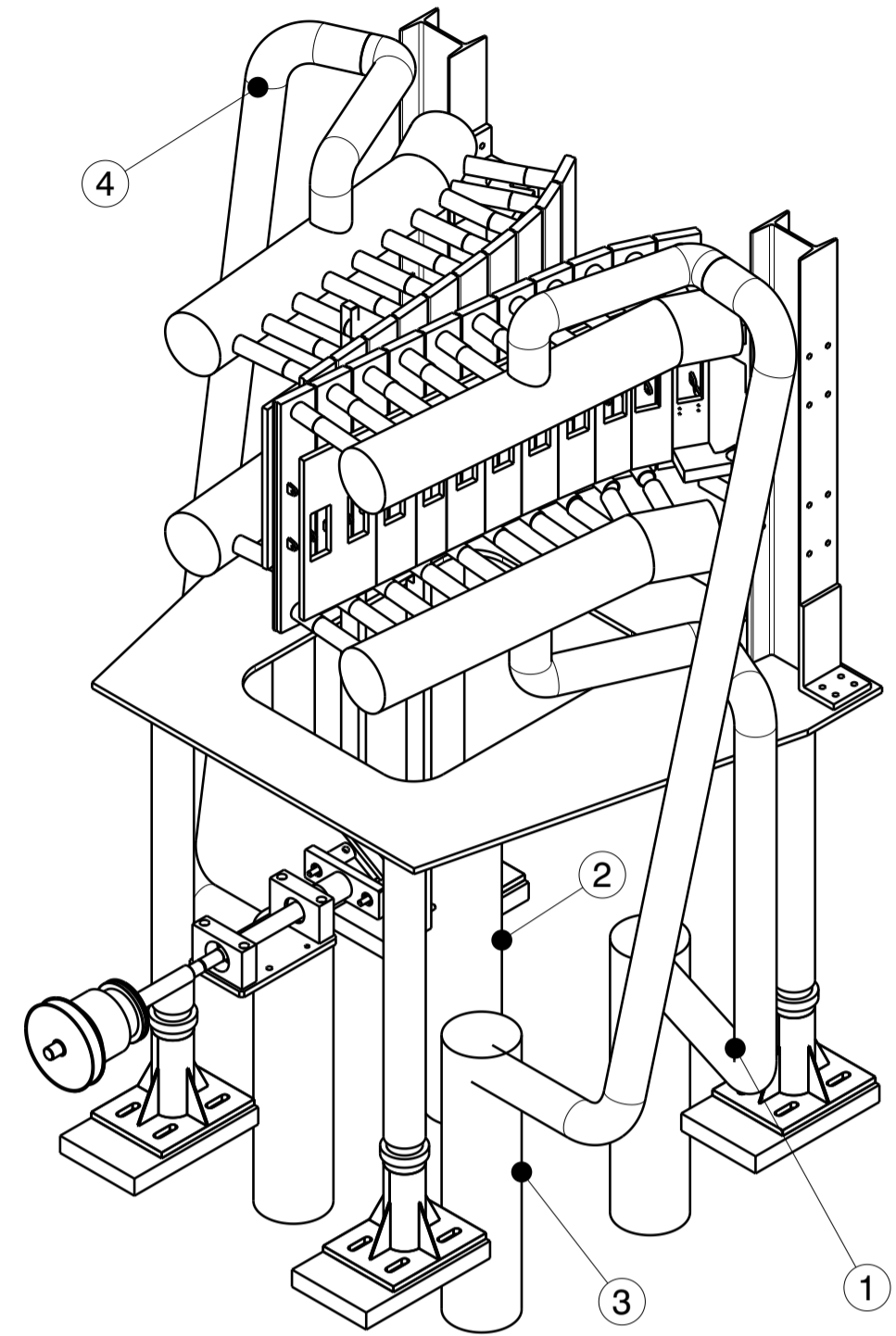
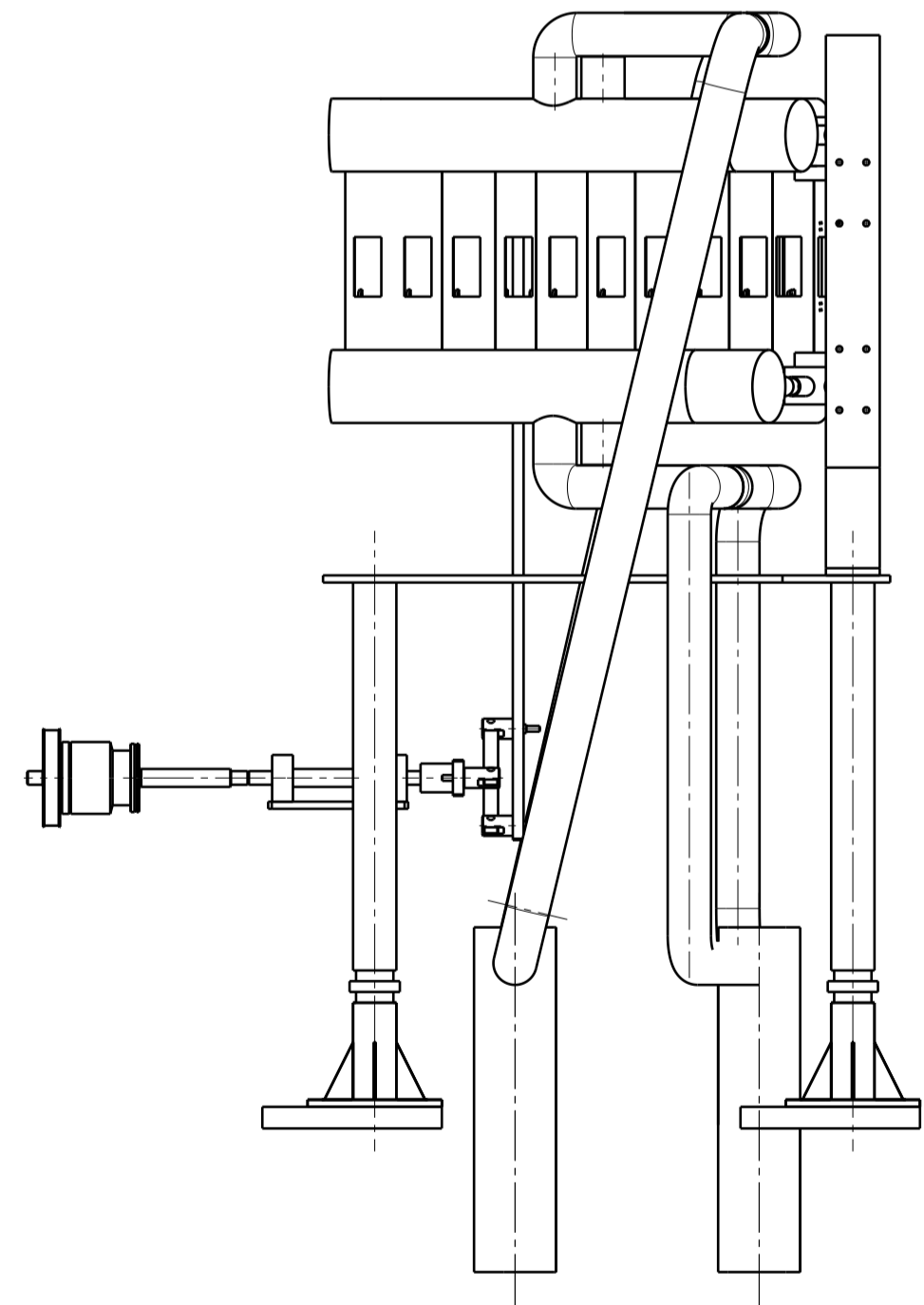


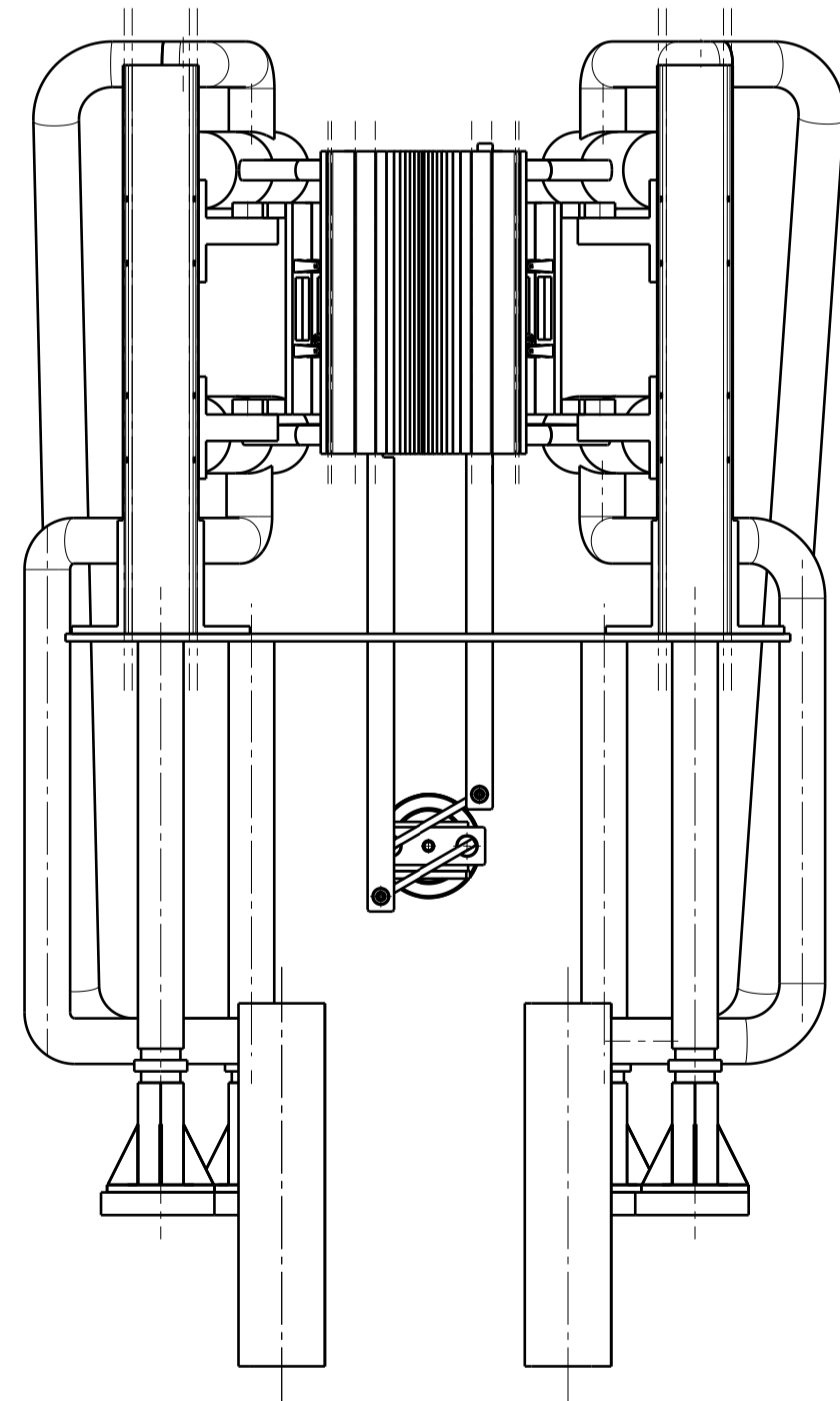
Top view
Scale: 1:10



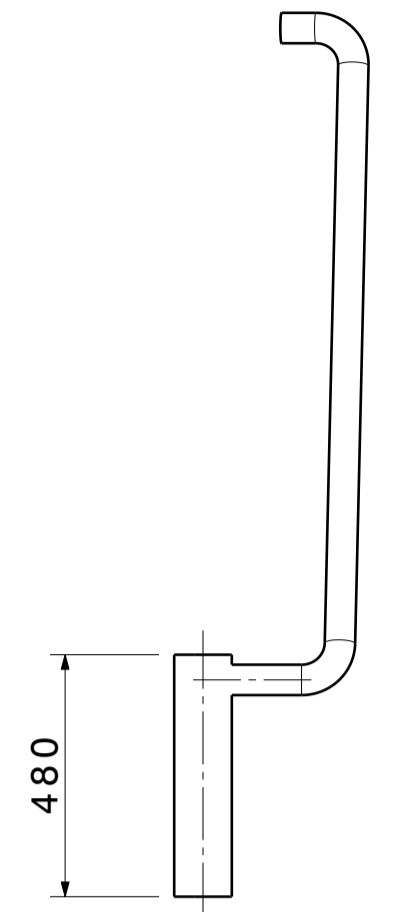
Isometric view
Scale: 1:10



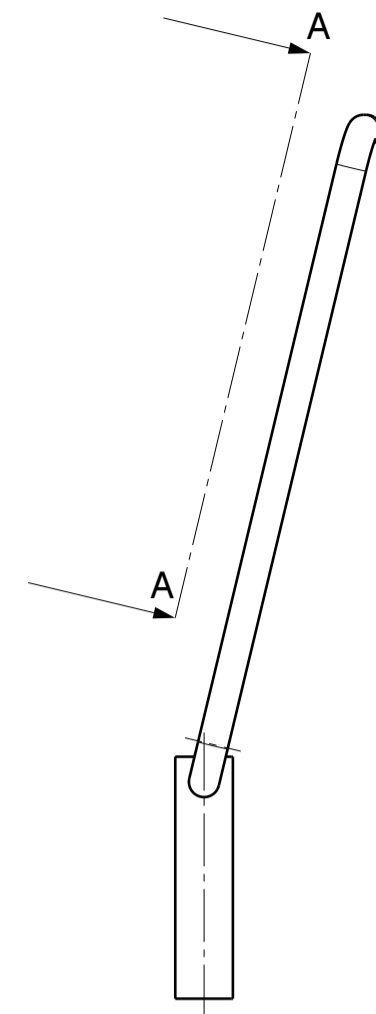
Front view
Scale: 1:10



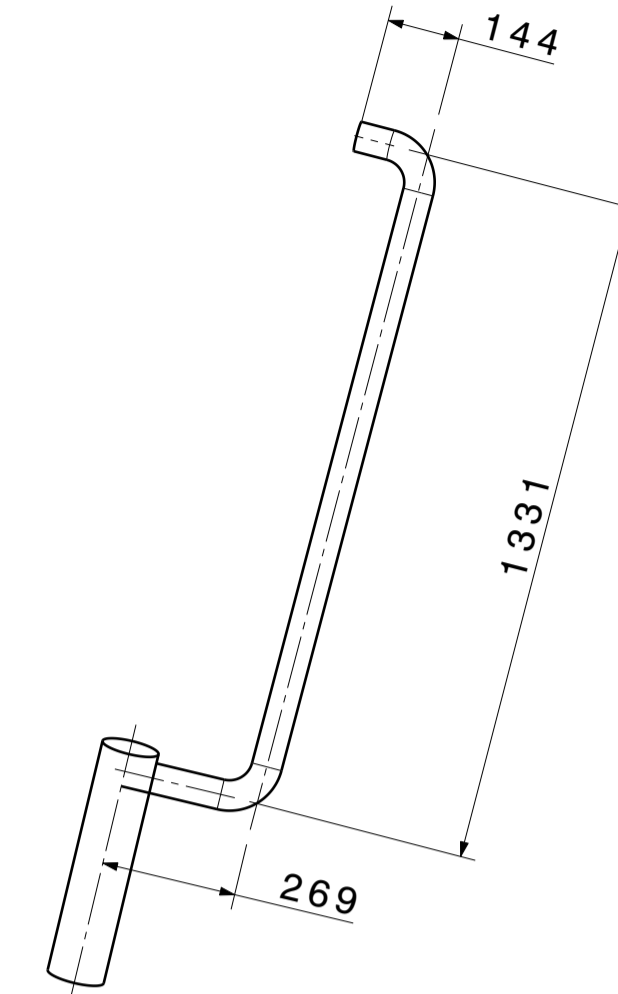
Right view
Scale: 1:10



Front view
Scale: 1:15

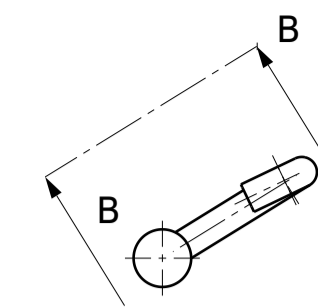


Right view
Scale: 1:15

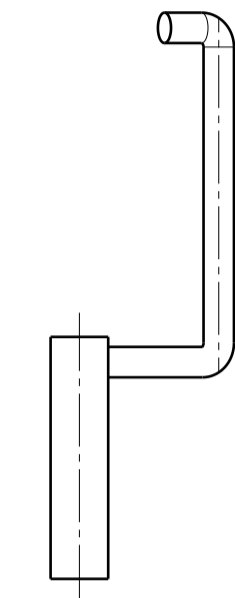


Auxiliary view A
Scale: 1:15

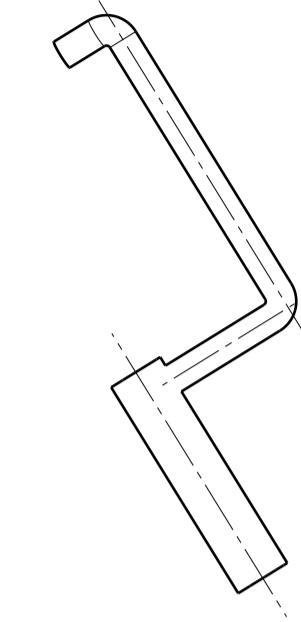
③ .OUTLET-1



Top view
Scale: 1:15

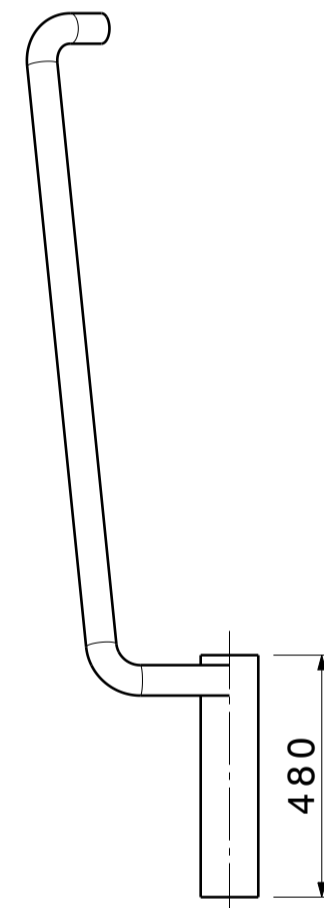


Front view
Scale: 1:15

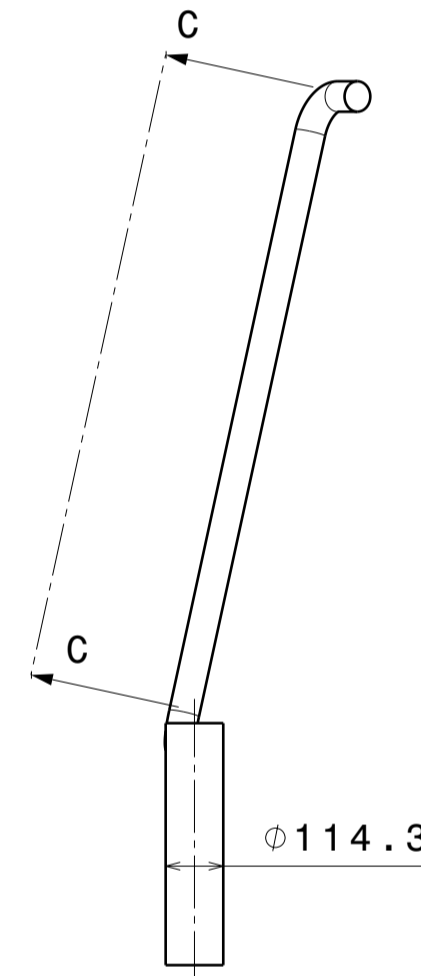


Auxiliary view B
Scale: 1:15

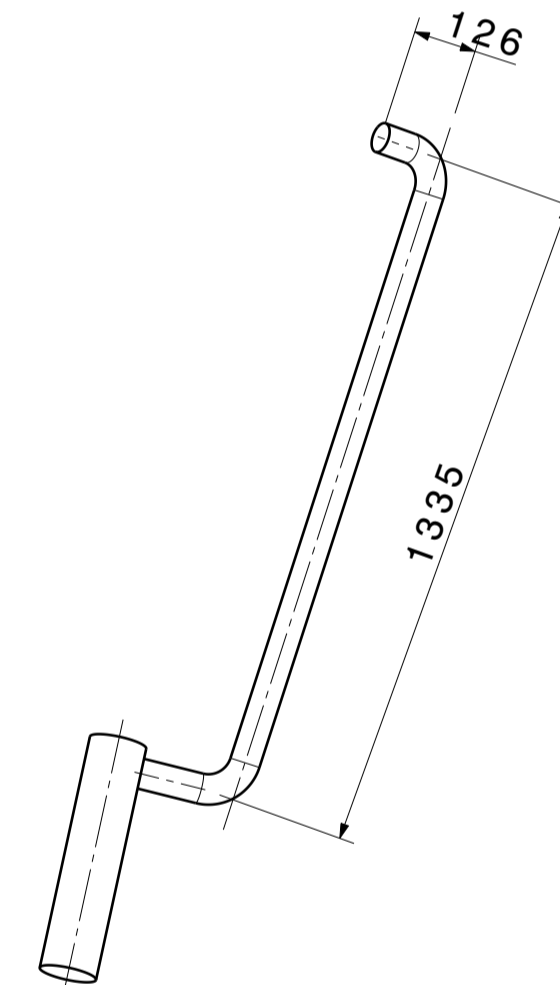
① .INLET-1



Front view
Scale: 1:15

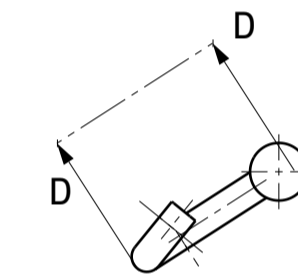


Right view
Scale: 1:15

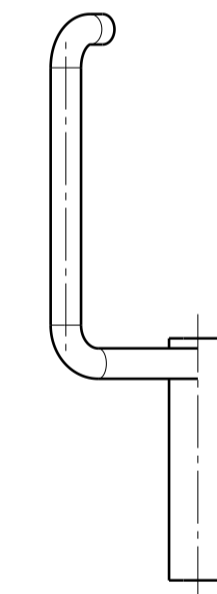


Auxiliary view C
Scale: 1:15

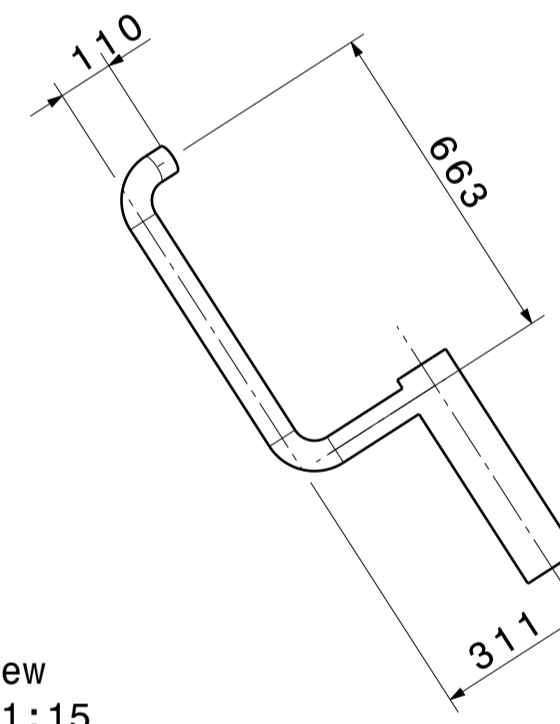
④ .OUTLET-2



Top view
Scale: 1:15



Front view
Scale: 1:15



Auxiliary view D
Scale: 1:15

② .INLET-2

NOTE:

- 1 3D MODEL SHOWN IN THIS SHEET IS FOR THE SAKE OF UNDERSTANDING ONLY FOR THE VENDORS.
- 2 ALL PIPES ARE OF SCH.10S.
- 3 REQUIRED PIPES & BENDS ARE FREE ISSUE OF MATERIAL.

DRG. NO	▽ 8-25	▽▽ 1.6-8	▽▽▽ 0.025-1.6	▽▽▽▽ < 0.025	REVISION COLUMN				NBI GROUP:	SIZE	INSTITUTE FOR PLASMA RESEARCH		
CO-ORDINATED BY					REV	ZONE	DESCRIPTION	DATE	REMARKS	APPROVED BY	A3	BHAT, GANDHINAGAR-382 428.	
MACHINING DEVIATIONS FOR NON-TOLERANCED DIMENSIONS													
LENGTH IN mm OF SHORTER SIDE OF ANGLES				LENGTH OR DIA	UPTO 6	6-30	30-120	120-315					TITLE
UPTO 10	10-50	50-120	OVER 120-400		±0.1	±0.2	±0.3	±0.5					CALORIMETER ASSY & DETAILS
+1'	+0'-30'	+0'-20'	+0'-10'						SCALE	DATE	REF DRG NO:	REV RD	
									DRAWN	ARK	DRG. NO	2.04.02.031	
									DESIGNED		SHEET 01 OF 01		
									APPROVED				